

Lower Thames Crossing 7.16 Community Impact Report (Clean version - part 4 of 4)

APFP Regulation 5(2)(q)

Infrastructure Planning (Applications:
Prescribed Forms and Procedure)
Regulations 2009

Volume 7

DATE: August 2023
DEADLINE: 2

Planning Inspectorate Scheme Ref: TR010032
Application Document Ref: TR010032/APP/7.16

VERSION: 2.0

Revision history

Version	Date	Submitted at
1.0	31 October 2022	DCO Application
2.0	3 August 2023	Examination (Deadline 2)

Lower Thames Crossing

7.16 Community Impact Report (Clean version)

List of contents

	Page number
1 Executive summary	1
2 Introduction	2
2.1 Purpose of the document.....	2
2.2 Project overview	2
3 How this document is structured	7
3.1 Chapters in this report	7
3.2 Communities in the immediate area	8
3.3 Communities in the wider area	9
3.4 Matching wards to operational sections.....	10
4 Construction overview	12
4.1 Description of construction activities.....	12
4.2 Overview of construction compounds	12
4.3 Traffic management.....	14
4.4 Phasing and duration.....	14
4.5 Project-wide construction mitigation	15
5 Operation overview	17
5.1 Key elements	17
5.2 Project benefits	17
6 Communities in the immediate area	20
6.1 Shorne, Cobham and Luddesdown ward.....	20
6.2 Higham ward.....	44
6.3 Singlewell ward.....	56
6.4 Riverview ward	70
6.5 Westcourt ward.....	83
6.6 Chalk ward.....	96
6.7 East Tilbury ward.....	108
6.8 Tilbury Riverside and Thurrock Park ward.....	132
6.9 Tilbury St Chads ward	147
6.10 Chadwell St Mary ward.....	160

6.11	Little Thurrock Blackshots ward	178
6.12	Stifford Clays ward.....	191
6.13	Orsett ward	203
6.14	Belhus ward	238
6.15	Ockendon ward.....	247
6.16	Upminster ward.....	264
6.17	Cranham ward	284
6.18	Warley and South Weald wards.....	298
7	Communities in the wider area	313
7.1	Medway	313
7.2	Gravesham	320
7.3	Dartford.....	333
7.4	Thurrock	339
7.5	Havering	349
8	Monitoring.....	355
8.1	Project-wide monitoring proposals.....	355
References		359
Glossary		360
Appendices		425
Appendix A Traffic Change Maps.....		426
Appendix B Accessibility Maps.....		571
Appendix C Figures.....		668

List of plates

	Page number
Plate 2.1 Lower Thames Crossing route.....	4
Plate 6.1 Location of Shorne, Cobham and Luddesdown ward	20
Plate 6.2 Location of Higham ward	44
Plate 6.3 Location of Singlewell ward	56
Plate 6.4 Location of Riverview ward	70
Plate 6.5 Location of Westcourt ward	83
Plate 6.6 Location of Chalk ward	96
Plate 6.7 Location of East Tilbury ward	108
Plate 6.8 Location of Tilbury Riverside and Thurrock Park ward	132
Plate 6.9 Location of Tilbury St Chads ward	147
Plate 6.10 Location of Chadwell St Mary ward	160
Plate 6.11 Location of Little Thurrock Blackshots ward	178
Plate 6.12 Location of Stifford Clays ward	191
Plate 6.13 Location of Orsett ward.....	203
Plate 6.14 Location of Belhus ward	238
Plate 6.15 Location of Ockendon ward	247
Plate 6.16 Location of Upminster ward	264
Plate 6.17 Location of Cranham ward.....	284
Plate 6.18 Location of Warley ward	298
Plate 6.19 Location of South Weald ward.....	298
Plate 7.1 Location of communities in the wider area: Medway	313
Plate 7.2 Location of communities in the wider area: Gravesham	320
Plate 7.3 Location of communities in the wider area: Dartford.....	333
Plate 7.4 Location of communities in the wider area: Thurrock (western wards).....	339
Plate 7.5 Location of communities in the wider area: Thurrock (eastern wards).....	339
Plate 7.6 Location of communities in the wider area: Havering	349
Plate A.1 AM peak actual change in Shorne, Cobham and Luddesdown.....	427
Plate A.2 AM peak percentage change in Shorne, Cobham and Luddesdown	428
Plate A.3 Interpeak actual change in Shorne, Cobham and Luddesdown	429
Plate A.4 Interpeak percentage change in Shorne, Cobham and Luddesdown.....	430
Plate A.5 PM actual change in Shorne, Cobham and Luddesdown.....	431
Plate A.6 PM percentage change in Shorne, Cobham and Luddesdown	432
Plate A.7 AM peak actual change in Higham.....	433
Plate A.8 AM peak percentage change in Higham	434
Plate A.9 Interpeak actual change in Higham.....	435
Plate A.10 Interpeak percentage change in Higham.....	436
Plate A.11 PM actual change in Higham	437
Plate A.12 PM percentage change in Higham	438
Plate A.13 AM peak actual change in Singlewell	439
Plate A.14 AM peak percentage change in Singlewell.....	440

Plate A.15 Interpeak actual change in Singlewell	441
Plate A.16 Interpeak percentage change in Singlewell.....	442
Plate A.17 PM actual change in Singlewell.....	443
Plate A.18 PM percentage change in Singlewell	444
Plate A.19 AM peak actual change in Riverview.....	445
Plate A.20 AM peak percentage change in Riverview	446
Plate A.21 Interpeak actual change in Riverview.....	447
Plate A.22 Interpeak percentage change in Riverview	448
Plate A.23 PM actual change in Riverview	449
Plate A.24 PM percentage change in Riverview	450
Plate A.25 AM peak actual change in Westcourt.....	451
Plate A.26 AM peak percentage change in Westcourt.....	452
Plate A.27 Interpeak actual change in Westcourt	453
Plate A.28 Interpeak percentage change in Westcourt.....	454
Plate A.29 PM actual change in Westcourt.....	455
Plate A.30 PM percentage change in Westcourt	456
Plate A.31 AM peak actual change in Chalk.....	457
Plate A.32 AM peak percentage change in Chalk.....	458
Plate A.33 Interpeak actual change in Chalk	459
Plate A.34 Interpeak percentage change in Chalk.....	460
Plate A.35 PM actual change in Chalk.....	461
Plate A.36 PM percentage change in Chalk	462
Plate A.37 AM peak actual change in East Tilbury	463
Plate A.38 AM peak percentage change in East Tilbury.....	464
Plate A.39 Interpeak actual change in East Tilbury	465
Plate A.40 Interpeak percentage change in East Tilbury	466
Plate A.41 PM actual change in East Tilbury.....	467
Plate A.42 PM percentage change in East Tilbury.....	468
Plate A.43 AM peak actual change in Tilbury Riverside and Thurrock Park	469
Plate A.44 AM peak percentage change in Tilbury Riverside and Thurrock Park.....	470
Plate A.45 Interpeak actual change in Tilbury Riverside and Thurrock Park	471
Plate A.46 Interpeak percentage change in Tilbury Riverside and Thurrock Park	472
Plate A.47 PM actual change in Tilbury Riverside and Thurrock Park.....	473
Plate A.48 PM percentage change in Tilbury Riverside and Thurrock Park	474
Plate A.49 AM peak actual change in Tilbury St Chads.....	475
Plate A.50 AM peak percentage change Tilbury St Chads.....	476
Plate A.51 Interpeak actual change Tilbury St Chads.....	477
Plate A.52 Interpeak percentage change Tilbury St Chads	478
Plate A.53 PM actual change Tilbury St Chads	479
Plate A.54 PM percentage change Tilbury St Chads.....	480
Plate A.55 AM peak actual change in Chadwell St Mary	481
Plate A.56 AM peak percentage change in Chadwell St Mary.....	482
Plate A.57 Interpeak actual change in Chadwell St Mary	483
Plate A.58 Interpeak percentage change in Chadwell St Mary.....	484

Plate A.59 PM actual change in Chadwell St Mary	485
Plate A.60 PM percentage change in Chadwell St Mary	486
Plate A.61 AM peak actual change in Little Thurrock Blackshots	487
Plate A.62 AM peak percentage change in Little Thurrock Blackshots.....	488
Plate A.63 Interpeak actual change in Little Thurrock Blackshots	489
Plate A.64 Interpeak percentage change in Little Thurrock Blackshots	490
Plate A.65 PM actual change in Little Thurrock Blackshots.....	491
Plate A.66 PM percentage change in Little Thurrock Blackshots.....	492
Plate A.67 AM peak actual change in Stifford Clays.....	493
Plate A.68 AM peak percentage change in Stifford Clays	494
Plate A.69 Interpeak actual change in Stifford Clays	495
Plate A.70 Interpeak percentage change in Stifford Clays.....	496
Plate A.71 PM actual change in Stifford Clays.....	497
Plate A.72 PM percentage change in Stifford Clays	498
Plate A.73 AM peak actual change in Orsett	499
Plate A.74 AM peak percentage change in Orsett.....	500
Plate A.75 Interpeak actual change in Orsett	501
Plate A.76 Interpeak percentage change in Orsett.....	502
Plate A.77 PM actual change in Orsett.....	503
Plate A.78 PM percentage change in Orsett.....	504
Plate A.79 AM peak actual change in Belhus	505
Plate A.80 AM peak percentage change in Belhus.....	506
Plate A.81 Interpeak actual change in Belhus	507
Plate A.82 Interpeak percentage change in Belhus	508
Plate A.83 PM peak actual change in Belhus	509
Plate A.84 PM peak percentage change in Belhus.....	510
Plate A.85 AM peak actual change in Ockendon.....	511
Plate A.86 AM peak percentage change in Ockendon	512
Plate A.87 Interpeak actual change in Ockendon.....	513
Plate A.88 Interpeak percentage change in Ockendon.....	514
Plate A.89 PM peak actual change in Ockendon.....	515
Plate A.90 PM peak percentage change in Ockendon	516
Plate A.91 AM peak actual change in Upminster.....	517
Plate A.92 AM peak percentage change in Upminster	518
Plate A.93 Interpeak actual change in Upminster.....	519
Plate A.94 Interpeak percentage change in Upminster.....	520
Plate A.95 PM actual change in Upminster	521
Plate A.96 PM percentage change in Upminster	522
Plate A.97 AM peak actual change in Cranham	523
Plate A.98 AM peak percentage change in Cranham	524
Plate A.99 Interpeak actual change in Cranham.....	525
Plate A.100 Interpeak percentage change in Cranham	526
Plate A.101 PM actual change in Cranham	527
Plate A.102 PM percentage change in Cranham.....	528

Plate A.103 AM peak actual change in Warley	529
Plate A.104 AM peak actual change in South Weald.....	530
Plate A.105 AM peak percentage change in Warley.....	531
Plate A.106 AM peak percentage change in South Weald	532
Plate A.107 Interpeak actual change in Warley	533
Plate A.108 Interpeak actual change in South Weald.....	534
Plate A.109 Interpeak percentage change in Warley	535
Plate A.110 Interpeak percentage change in South Weald	536
Plate A.111 PM actual change in Warley.....	537
Plate A.112 PM actual change in South Weald	538
Plate A.113 PM percentage change in Warley	539
Plate A.114 PM percentage change in South Weald	540
Plate A.115 AM peak actual change in Medway.....	541
Plate A.116 AM peak percentage change in Medway	542
Plate A.117 Interpeak actual change in Medway	543
Plate A.118 Interpeak percentage change in Medway.....	544
Plate A.119 PM peak actual change in Medway.....	545
Plate A.120 PM peak percentage change in Medway	546
Plate A.121 AM peak actual change in Gravesham.....	547
Plate A.122 AM peak percentage change in Gravesham	548
Plate A.123 Interpeak actual change in Gravesham.....	549
Plate A.124 Interpeak percentage change in Gravesham	550
Plate A.125 PM peak actual change in Gravesham.....	551
Plate A.126 PM peak percentage change in Gravesham	552
Plate A.127 AM peak actual change in Dartford	553
Plate A.128 AM peak percentage change in Dartford.....	554
Plate A.129 Interpeak actual change in Dartford	555
Plate A.130 Interpeak percentage change in Dartford.....	556
Plate A.131 PM peak actual change in Dartford	557
Plate A.132 PM peak percentage change in Dartford.....	558
Plate A.133 AM peak actual change in Thurrock.....	559
Plate A.134 AM peak percentage change in Thurrock.....	560
Plate A.135 Interpeak actual change in Thurrock.....	561
Plate A.136 Interpeak percentage change in Thurrock.....	562
Plate A.137 PM peak actual change in Thurrock.....	563
Plate A.138 PM peak percentage change in Thurrock.....	564
Plate A.139 AM peak actual change in Havering.....	565
Plate A.140 AM peak percentage change in Havering	566
Plate A.141 Interpeak actual change in Havering.....	567
Plate A.142 Interpeak percentage change in Havering.....	568
Plate A.143 PM peak actual change in Havering.....	569
Plate A.144 PM peak percentage change in Havering	570
Plate B.1 AM peak 30 minute travel time in Shorne, Cobham and Luddesdown	572
Plate B.2 AM peak 60 minute travel time in Shorne, Cobham and Luddesdown	573

Plate B.3 PM peak 30 minute travel time in Shorne, Cobham and Luddesdown	574
Plate B.4 PM peak 60 minute travel time in Shorne, Cobham and Luddesdown	575
Plate B.5 AM peak 30 minute travel time in Higham	576
Plate B.6 AM peak 60 minute travel time in Higham	577
Plate B.7 PM peak 30 minute travel time in Higham	578
Plate B.8 PM peak 60 minute travel time in Higham	579
Plate B.9 AM peak 30 minute travel time in Singlewell	580
Plate B.10 AM peak 60 minute travel time in Singlewell	581
Plate B.11 PM peak 30 minute travel time in Singlewell	582
Plate B.12 PM peak 60 minute travel time in Singlewell	583
Plate B.13 AM peak 30 minute travel time in Riverview	584
Plate B.14 AM peak 60 minute travel time in Riverview	585
Plate B.15 PM peak 30 minute travel time in Riverview	586
Plate B.16 PM peak 60 minute travel time in Riverview	587
Plate B.17 AM peak 30 minute travel time in Westcourt	588
Plate B.18 AM peak 60 minute travel time in Westcourt	589
Plate B.19 PM peak 30 minute travel time in Westcourt	590
Plate B.20 PM peak 60 minute travel time in Westcourt	591
Plate B.21 AM peak 30 minute travel time in Chalk	592
Plate B.22 AM peak 60 minute travel time in Chalk	593
Plate B.23 PM peak 30 minute travel time in Chalk	594
Plate B.24 PM peak 60 minute travel time in Chalk	595
Plate B.25 AM peak 30 minute travel time in East Tilbury	596
Plate B.26 AM peak 60 minute travel time in East Tilbury	597
Plate B.27 PM peak 30 minute travel time in East Tilbury	598
Plate B.28 PM peak 60 minute travel time in East Tilbury	599
Plate B.29 AM peak 30 minute travel time in Tilbury Riverside and Thurrock	600
Plate B.30 AM peak 60 minute travel time in Tilbury Riverside and Thurrock	601
Plate B.31 PM peak 30 minute travel time in Tilbury Riverside and Thurrock	602
Plate B.32 PM peak 60 minute travel time in Tilbury Riverside and Thurrock	603
Plate B.33 AM peak 30 minute travel time in Tilbury St Chads	604
Plate B.34 AM peak 60 minute travel time in Tilbury St Chads	605
Plate B.35 PM peak 30 minute travel time in Tilbury St Chads	606
Plate B.36 PM peak 60 minute travel time in Tilbury St Chads	607
Plate B.37 AM peak 30 minute travel time in Chadwell St Marys	608
Plate B.38 AM peak 60 minute travel time Chadwell St Marys	609
Plate B.39 PM peak 30 minute travel time Chadwell St Marys	610
Plate B.40 PM peak 60 minute travel time Chadwell St Marys	611
Plate B.41 AM peak 30 minute travel time in Little Thurrock Blackshots	612
Plate B.42 AM peak 60 minute travel time in Little Thurrock Blackshots	613
Plate B.43 PM peak 30 minute travel time in Little Thurrock Blackshots	614
Plate B.44 PM peak 60 minute travel time in Little Thurrock Blackshots	615
Plate B.45 AM peak 30 minute travel time in Stifford Clays	616
Plate B.46 AM peak 60 minute travel time in Stifford Clays	617

Plate B.47 PM peak 30 minute travel time in Stifford Clays.....	618
Plate B.48 PM peak 60 minute travel time in Stifford Clays.....	619
Plate B.49 AM peak 30 minute travel time in Orsett	620
Plate B.50 AM peak 60 minute travel time in Orsett	621
Plate B.51 PM peak 30 minute travel time in Orsett	622
Plate B.52 PM peak 60 minute travel time in Orsett	623
Plate B.53 AM peak 30 minute travel time in Belhus	624
Plate B.54 AM peak 60 minute travel time in Belhus	625
Plate B.55 PM peak 30 minute travel time in Belhus	626
Plate B.56 PM peak 60 minute travel time in Belhus	627
Plate B.57 AM peak 30 minute travel time in Ockendon.....	628
Plate B.58 AM peak 60 minute travel time in Ockendon.....	629
Plate B.59 PM peak 30 minute travel time in Ockendon.....	630
Plate B.60 PM peak 60 minute travel time in Ockendon.....	631
Plate B.61 AM peak 30 minute travel time in Upminster.....	632
Plate B.62 AM peak 60 minute travel time in Upminster.....	633
Plate B.63 PM peak 30 minute travel time in Upminster.....	634
Plate B.64 PM peak 60 minute travel time in Upminster.....	635
Plate B.65 AM peak 30 minute travel time in Cranham	636
Plate B.66 AM peak 60 minute travel time in Cranham	637
Plate B.67 PM peak 30 minute travel time in Cranham	638
Plate B.68 PM peak 60 minute travel time in Cranham	639
Plate B.69 AM peak 30 minute travel time in Warley.....	640
Plate B.70 AM peak 30 minute travel time in South Weald.....	641
Plate B.71 AM peak 60 minute travel time in Warley.....	642
Plate B.72 AM peak 60 minute travel time in South Weald.....	643
Plate B.73 PM peak 30 minute travel time in Warley	644
Plate B.74 PM peak 30 minute travel time in South Weald.....	645
Plate B.75 PM peak 60 minute travel time in Warley	646
Plate B.76 PM peak 60 minute travel time in South Weald.....	647
Plate B.77 AM peak 30 minute travel time in Medway.....	648
Plate B.78 AM peak 60 minute travel time in Medway.....	649
Plate B.79 PM peak 30 minute travel time in Medway.....	650
Plate B.80 PM peak 60 minute travel time in Medway.....	651
Plate B.81 AM peak 30 minute travel time in Gravesham.....	652
Plate B.82 AM peak 60 minute travel time in Gravesham.....	653
Plate B.83 PM peak 30 minute travel time in Gravesham.....	654
Plate B.84 PM peak 60 minute travel time in Gravesham.....	655
Plate B.85 AM peak 30 minute travel time in Dartford	656
Plate B.86 AM peak 60 minute travel time in Dartford	657
Plate B.87 PM peak 30 minute travel time in Dartford	658
Plate B.88 PM peak 60 minute travel time in Dartford	659
Plate B.89 AM peak 30 minute travel time in Thurrock.....	660
Plate B.90 AM peak 60 minute travel time in Thurrock.....	661

Plate B.91 PM peak 30 minute travel time in Thurrock	662
Plate B.92 PM peak 60 minute travel time in Thurrock	663
Plate B.93 AM peak 30 minute travel time in Havering.....	664
Plate B.94 AM peak 60 minute travel time in Havering.....	665
Plate B.95 PM peak 30 minute travel time in Havering.....	666
Plate B.96 PM peak 60 minute travel time in Havering.....	667

List of tables

	Page number
Table 4.1 Construction modelling phases	14
Table 6.1 Average daily vehicle numbers going to compounds near Shorne, Cobham and Luddesdown ward.....	24
Table 6.2 Predicted construction noise levels in Shorne, Cobham and Luddesdown ward	30
Table 6.3 Average daily vehicle numbers going to compounds near Higham ward	47
Table 6.4 Predicted construction noise levels in Higham ward	49
Table 6.5 Average daily vehicle numbers going to Marling Cross Compound	58
Table 6.6 Average daily vehicle numbers going to compounds near Singlewell ward	59
Table 6.7 Predicted construction noise levels in Singlewell ward	62
Table 6.8 Average daily vehicle numbers going to a compound in Riverview ward	72
Table 6.9 Predicted construction noise levels in Riverview ward.....	74
Table 6.10 Average daily vehicle numbers going to compounds in or near Westcourt ward	86
Table 6.11 Predicted construction noise levels in Westcourt ward	88
Table 6.12 Average daily vehicle numbers going to compounds near Chalk ward	99
Table 6.13 Predicted construction noise levels in Chalk ward	100
Table 6.14 Average daily vehicle numbers going to a compound in East Tilbury ward ...	113
Table 6.15 Main traffic management measures in East Tilbury	113
Table 6.16 Predicted construction noise levels in East Tilbury ward	118
Table 6.17 Average daily vehicle numbers going to compounds in and near Tilbury Riverside and Thurrock Park ward.....	135
Table 6.18 Predicted construction noise levels in Tilbury Riverside and Thurrock Park ward.....	138
Table 6.19 Average daily vehicle numbers going to compounds near Tilbury St Chads ward.....	149
Table 6.20 Main traffic management measures in Tilbury St Chads ward	150
Table 6.21 Predicted construction noise levels in Tilbury St Chads ward.....	152
Table 6.22 Average daily vehicle numbers going to compounds near Chadwell St Mary ward.....	163
Table 6.23 Main traffic management measures in Chadwell St Mary ward	163
Table 6.24 Predicted construction noise levels in Chadwell St Mary ward	168
Table 6.25 Main traffic management measures in Little Thurrock Blackshots ward	180

Table 6.26 Predicted construction noise levels in Little Thurrock Blackshots ward	183
Table 6.27 Main traffic management measures in Stifford Clays ward	193
Table 6.28 Predicted construction noise levels in Stifford Clays ward	195
Table 6.29 Average daily vehicle numbers going to compounds in Orsett ward.....	211
Table 6.30 Main traffic management measures in Orsett ward.....	212
Table 6.31 Predicted construction noise levels in Orsett ward	221
Table 6.32 Average daily vehicle numbers going to compounds in Ockendon ward	250
Table 6.33 Main traffic management measures in Ockendon ward	250
Table 6.34 Predicted construction noise levels in Ockendon ward	254
Table 6.35 Daily average number of vehicles going to the M25 and Ockendon Road compounds	267
Table 6.36 Main traffic management measures in Upminster Ward	268
Table 6.37 Predicted construction noise levels in Upminster ward	272
Table 6.38 Average daily vehicle numbers going to compounds in Cranham ward.....	287
Table 6.39 Main traffic management measures in Cranham ward.....	288
Table 6.40 Predicted construction noise levels in Cranham ward.....	290
Table 6.41 Daily average number of vehicles going to the Warley Street compound	301
Table 6.42 Main traffic management measures in Warley and South Weald wards	302
Table 6.43 Predicted construction noise levels in Warley ward	304
Table 7.1 Predicted construction noise levels in Medway.....	315
Table 7.2 Predicted construction noise levels in Woodlands and Riverside wards.....	324
Table 7.3 Proposed traffic management measures relevant to Little Thurrock Rectory, and Chafford and North Stifford wards	342
Table 7.4 Predicted construction noise levels in Harold Wood ward	352

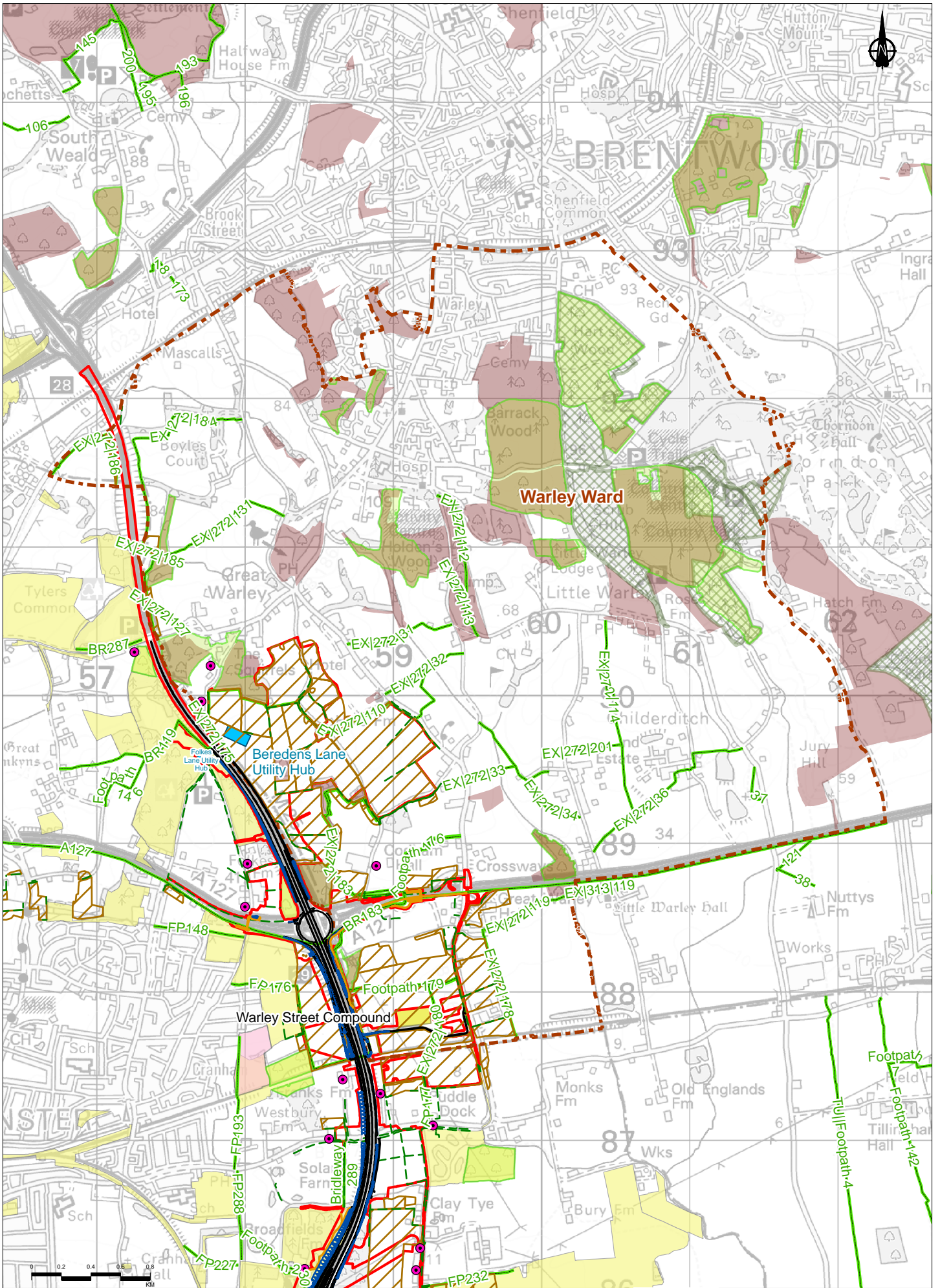
List of Figures

	Page number
Figure 3.1 Overview map of local authority areas and wards	669
Figure 4.1 Construction compounds and haul roads	670
Figure 6.1a Construction impacts summary plan of Shorne, Cobham and Luddesdown Ward	671
Figure 6.1b Operational impacts summary plan of Shorne, Cobham and Luddesdown Ward	672
Figure 6.1c Mitigation proposals in Shorne, Cobham and Luddesdown Ward	673
Figure 6.2a Construction impacts summary plan of Higham Ward	674
Figure 6.2b Operational impacts summary plan of Riverview Ward	675
Figure 6.2c Mitigation proposals in Riverview Ward	676
Figure 6.3a Construction impacts summary plan of Singlewell Ward	677
Figure 6.3b Operational impacts summary plan of Singlewell Ward	678
Figure 6.3c Mitigation proposals in Singlewell Ward	679

Figure 6.4a Construction impacts summary plan of Riverview Ward	680
Figure 6.4b Operational impacts summary plan of Riverview Ward	690
Figure 6.4c Mitigation proposals in Riverview Ward	691
Figure 6.5a Construction impacts summary plan of Westcourt Ward	692
Figure 6.5b Operational impacts summary plan of Westcourt Ward	693
Figure 6.5c Mitigation proposals in Westcourt Ward	694
Figure 6.6a Construction impacts summary plan of Chalk Ward	695
Figure 6.6b Operational impacts summary plan of Chalk Ward	696
Figure 6.6c Mitigation proposals in Chalk Ward	697
Figure 6.7a Construction impacts summary plan of East Tilbury Ward	698
Figure 6.7b Operational impacts summary plan of East Tilbury Ward	699
Figure 6.7c Mitigation proposals in East Tilbury Ward	700
Figure 6.8a Construction impacts summary plan of Tilbury Riverside and Thurrock Park Ward	701
Figure 6.8b Operational impacts summary plan of Tilbury Riverside and Thurrock Park Ward	702
Figure 6.8c Mitigation proposals in Tilbury Riverside and Thurrock Park Ward	703
Figure 6.9a Construction impacts summary plan of Tilbury St. Chads Ward	704
Figure 6.9b Operational impacts summary plan of Tilbury St. Chads Ward	705
Figure 6.9c Mitigation proposals in Tilbury St. Chads Ward	706
Figure 6.10a Construction impacts summary plan of Chadwell St. Mary Ward	707
Figure 6.10b Operational impacts summary plan of Chadwell St. Mary Ward	708
Figure 6.10c Mitigation proposals plan of Chadwell St. Mary Ward	709
Figure 6.11a Construction impacts summary plan of Little Thurrock Blackshots Ward ...	710
Figure 6.11b Operational impacts summary plan of Little Thurrock Blackshots Ward ...	711
Figure 6.11c Mitigation proposals in Little Thurrock Blackshots Ward	712
Figure 6.12a Construction impacts summary plan of Stifford Clays Ward	713
Figure 6.12b Operational impacts summary plan of Stifford Clays Ward.....	714
Figure 6.12c Mitigation proposals in Stifford Clays Ward	715
Figure 6.13a Construction impacts summary plan of Orsett Ward	716
Figure 6.13b Operational impacts summary plan of Orsett Ward	717
Figure 6.13c Mitigation proposals in Orsett Ward	718
Figure 6.14a Construction impacts summary plan of Belhus Ward	719
Figure 6.14b Operational impacts summary plan of Belhus Ward	720
Figure 6.14c Mitigation proposals in Belhus Ward	721
Figure 6.15a Construction impacts summary plan of Ockendon Ward	722

Figure 6.15b Operational impacts summary plan of Ockendon Ward	723
Figure 6.15c Mitigation proposals in Ockendon Ward	724
Figure 6.16a Construction impacts summary plan of Upminster Ward	725
Figure 6.16b Operational impacts summary plan of Upminster Ward	726
Figure 6.16c Mitigation proposals in Upminster Ward	727
Figure 6.17a Construction impacts summary plan of Cranham Ward	728
Figure 6.17b Operational impacts summary plan of Cranham Ward	729
Figure 6.17c Mitigation proposals in Cranham Ward	730
Figure 6.18a Construction impacts summary plan of Warley Ward	731
Figure 6.18a(i) Construction impacts summary plan of South Weald Ward	732
Figure 6.18b Operational impacts summary plan of Warley Ward	733
Figure 6.18b(ii) Operational impacts summary plan of South Weald Ward	734
Figure 6.18c Mitigation proposals in Warley Ward	735
Figure 6.18c(iii) Mitigation proposals in South Weald Ward	736
Figure 7.1 Community impacts in the wider area: Medway	737
Figure 7.2 Community impacts in the wider area: Gravesham	738
Figure 7.3 Community impacts in the wider area: Dartford	739
Figure 7.4 Community impacts in the wider area: Thurrock - west of Project	740
Figure 7.5 Community impacts in the wider area: Thurrock - east of Project	741
Figure 7.6 Community impacts in the wider area: Havering	742

Appendix C Figures



Rev	Status	Rev. Date	Purpose of revision	SW	MF	SW
P01	SB	21/10/2022	DCO Application			

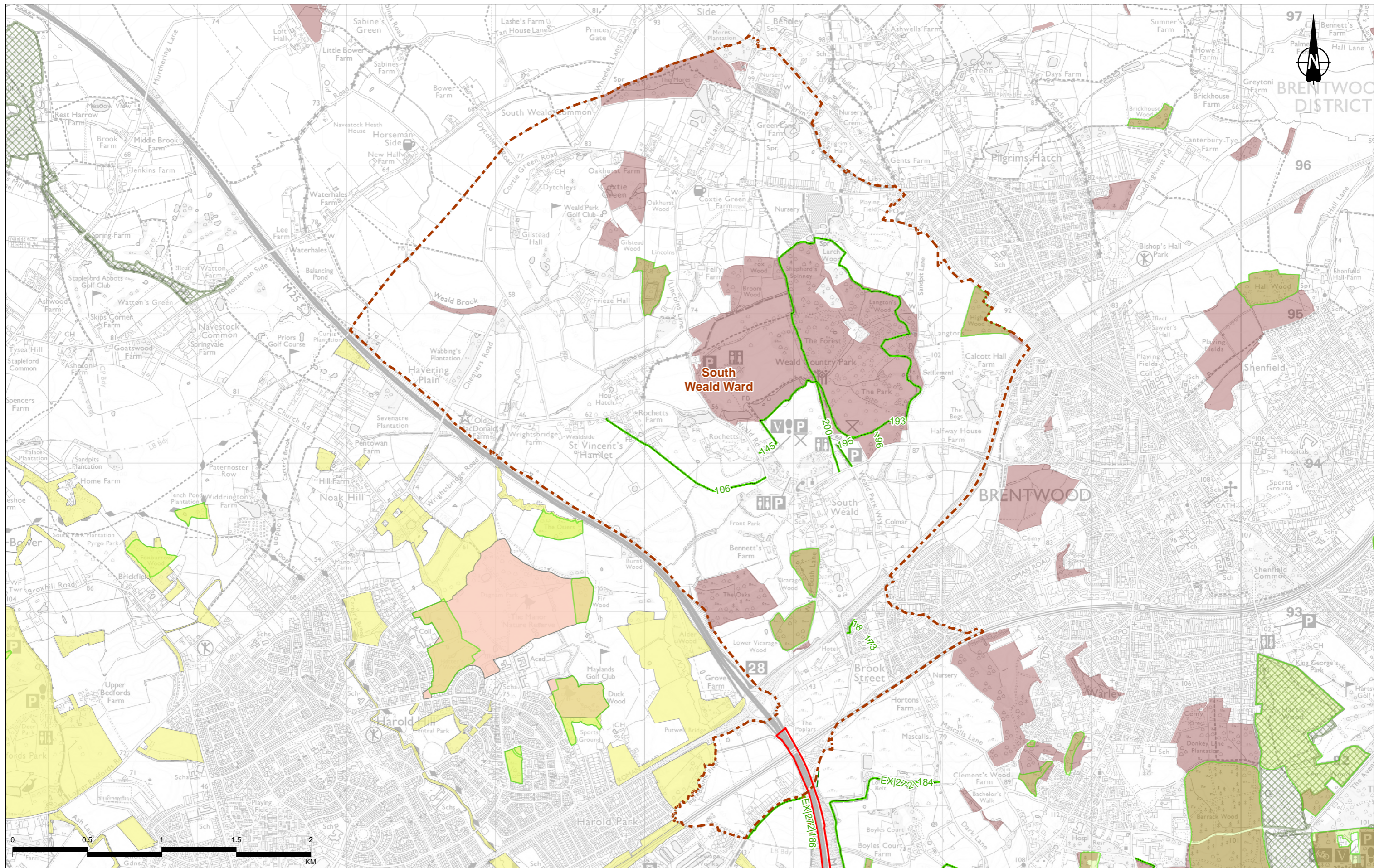
Legend	
	Order Limits
	Main works construction compound
	Utility Logistics Hub
	Construction noise receptor
	Existing Public Right of Way
	Ancient Woodland
	Local Nature Reserve
	Local Wildlife Site
	Site of Importance for Nature Conservation (SINC)
	Arable field
	Hedgerow
	Site of Special Scientific Interest



national highways

Project: LOWER THAMES CROSSING

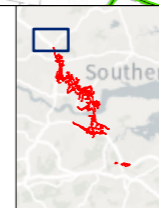
DCO APPLICATION		Drawing No	Scale
Application Document Number	TR010032/APP/7.16	A3	1:33,000
Drawing Title		Figure 6.18a - Construction impacts summary plan of Warley Ward	
Drawing Number		HE540039-CJV-EGN-SZP EGN00000000-DR-LE-80020	



Contains Ordnance Survey data. © Crown copyright and database rights 2022. Ordnance Survey 100030649
© Natural England copyright. Contains Ordnance Survey data © Crown copyright and database right 2022

Rev	Status	Rev. Date	Purpose of revision	Drawn	Chkd	Apprvd
P01	S8	21/10/2022	DCO Application	SW	SW	BF

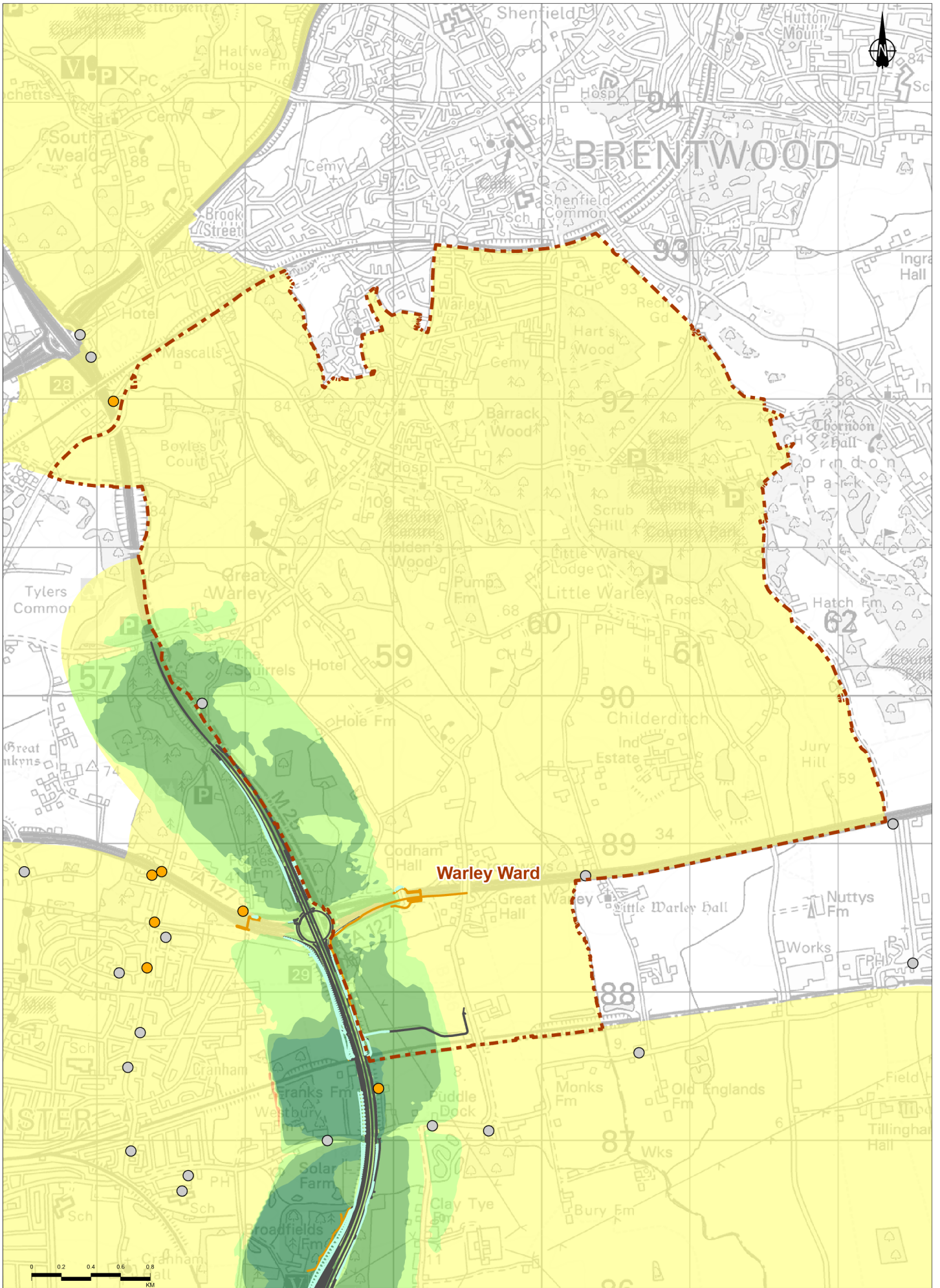
Legend	
Route alignment	Utility Logistics Hub
NMU route	Construction noise receptor
Earthworks	Existing Public Right of Way
Order Limits	Site of Importance for Nature Conservation (SINC)
Electoral ward boundary	Local Nature Reserve
Site of Special Scientific Interest	Local Wildlife Site
Hedgerow	Site of Importance for Nature Conservation (SINC)
	Arable field



Client
national highways

Project
LOWER THAMES CROSSING

Status	DCO APPLICATION	Original Size	A3	Revision	P01
Application Document Number	TR010032/APP/7.16	Scale	1:23,000		
Drawing Title	Figure 6.18a(i) - Construction impacts summary plan of South Weald Ward				
Drawing Number	HE540039-CJV-EGN-SZP_EGNE0000000-DR-LE-80020				

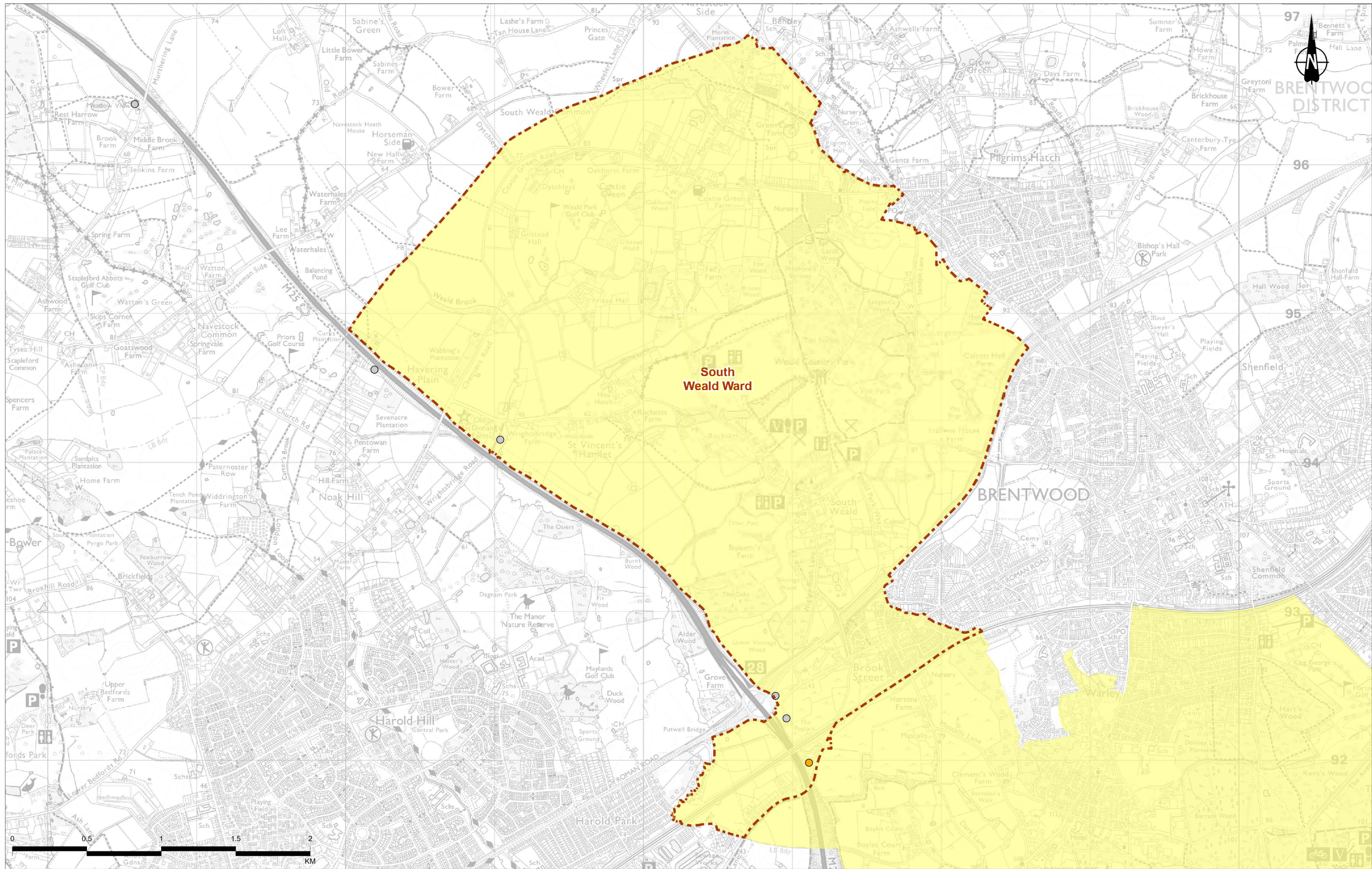


Rev	Status	Rev. Date	Purpose of revision	Drawn	Checked	Approved
P01	SB	24/10/2022	DCO Application	SW	SW	BP

Legend		Operation Change in Road Traffic Noise Opening Year		Degree of change in annual average nitrogen dioxide (NO ₂) concentrations	
	Route alignment		No Change/negligible, less than 1dB(A)		A minor worsening in air quality
	Earthworks		Minor noise increase, 1 to 2.9dB(A)		Negligible
	NMU Route		Moderate noise increase, 3 to 4.9dB(A)		
	Electoral ward boundary		Major noise increase, 5dB(A) or more		

LOWER THAMES CROSSING

Status: DCO APPLICATION
 Application Document Number: TR010032/APP/7.16
 Drawing Title: Figure 6.18b - Operational impacts summary plan of Warley Ward
 Drawing Number: HE540039-CJV-EGN-SZP_EGNE00000000-DR-LE-80020
 Scale: 1:33,000

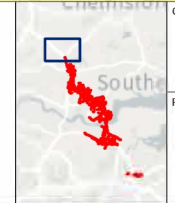


Contains Ordnance Survey data. © Crown copyright and database rights 2022. Ordnance Survey 100030649

Rev	Status	Rev Date	Purpose of revision	Drawn	Chkd	Appvd
P01	S8	24/10/2022	DCO Application	SW	SW	BF

Legend

- Electoral ward boundary
- Degree of change in annual average nitrogen dioxide (NO₂) concentrations
- Magnitude
 - A minor worsening in air quality
 - Negligible

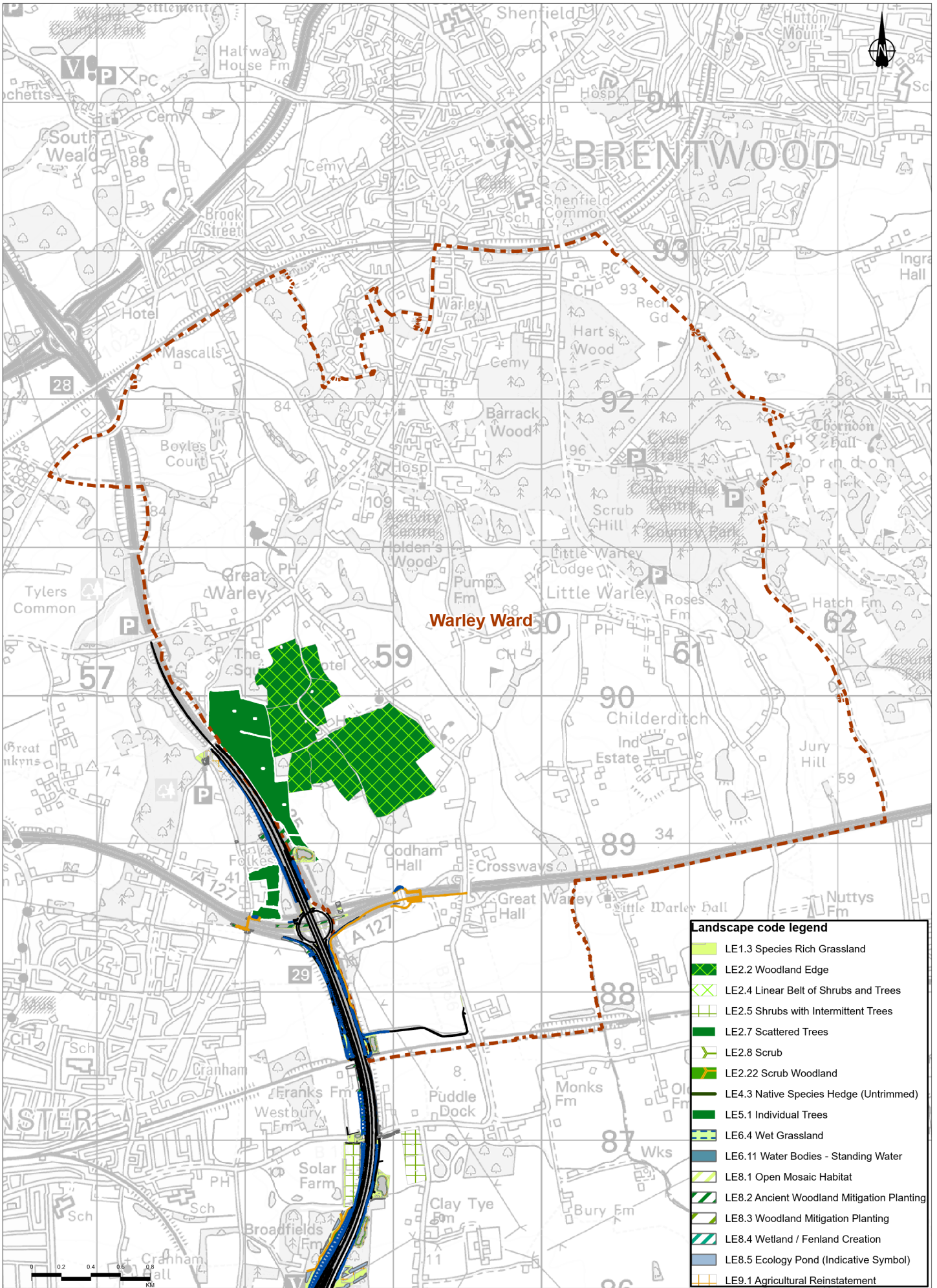


Client: **national highways**

Project: **LOWER THAMES CROSSING**

Status	DCO APPLICATION	Original Size	A3	Revision	P01
Application Document Number	TR010032/APP/7.16	Scale	1:23,000		
Drawing Title	Figure 6.18b(ii) - Operational impacts summary plan of South Weald Ward				
Drawing Number	HE540039-CJV-EGN-SZP_EGNE0000000-DR-LE-80020				

Z:\Environment\Community impacts Report\Figure 6b - Operational Impacts Summary Plan app



Landscape code legend	
	LE1.3 Species Rich Grassland
	LE2.2 Woodland Edge
	LE2.4 Linear Belt of Shrubs and Trees
	LE2.5 Shrubs with Intermittent Trees
	LE2.7 Scattered Trees
	LE2.8 Scrub
	LE2.22 Scrub Woodland
	LE4.3 Native Species Hedge (Untrimmed)
	LE5.1 Individual Trees
	LE6.4 Wet Grassland
	LE6.11 Water Bodies - Standing Water
	LE8.1 Open Mosaic Habitat
	LE8.2 Ancient Woodland Mitigation Planting
	LE8.3 Woodland Mitigation Planting
	LE8.4 Wetland / Fenland Creation
	LE8.5 Ecology Pond (Indicative Symbol)
	LE9.1 Agricultural Reinstatement

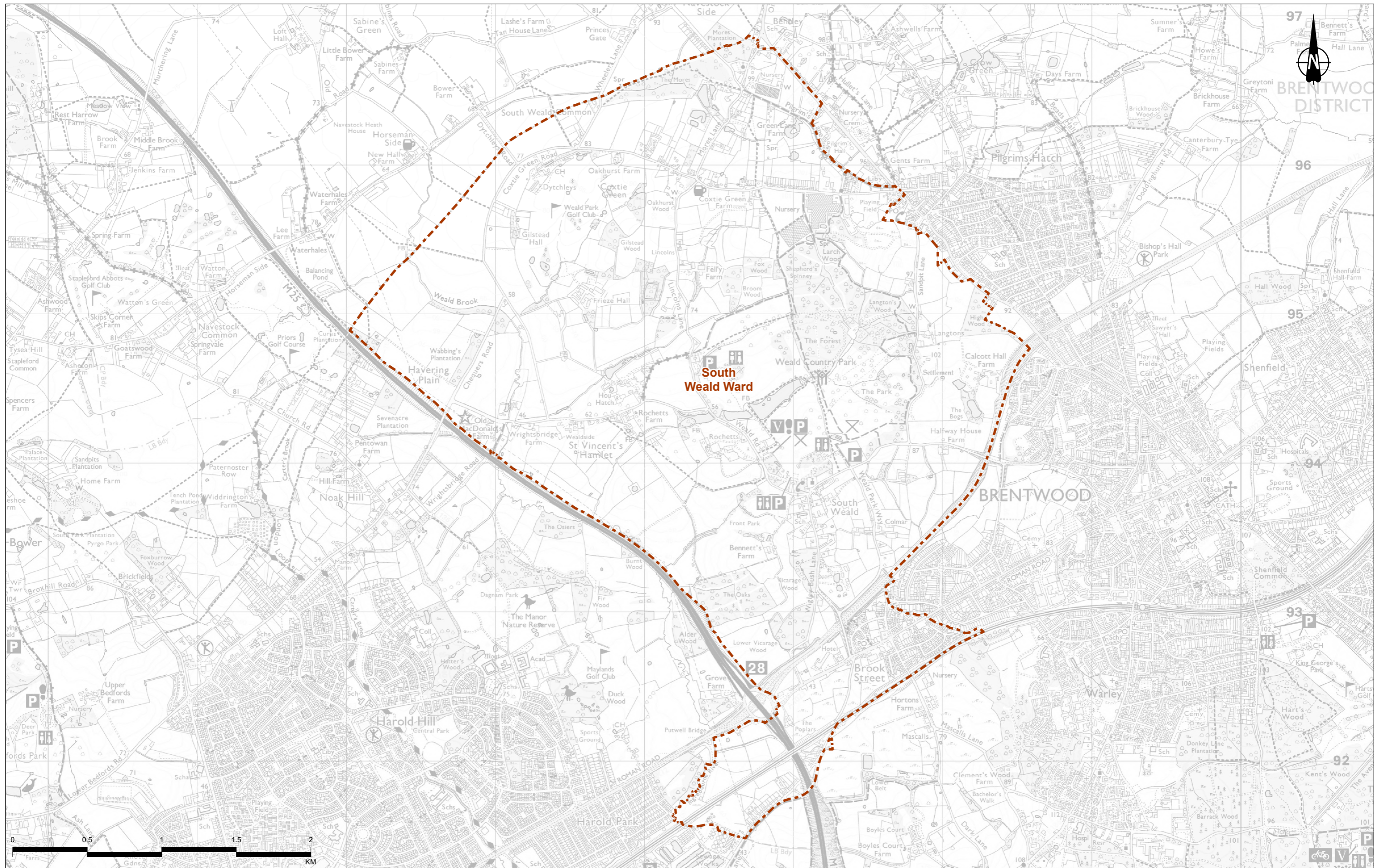
Rev	Status	Rev. Date	Purpose of revision	Drawn	Checked	Approved
P01	S8	21/10/2022	DCO Application	SW	SW	BF

Legend	
	Route alignment
	NMU Route
	Earthworks
	Electoral ward boundary



national highways
LOWER THAMES CROSSING

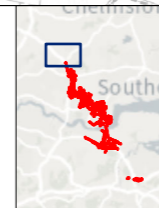
Status:	DCO APPLICATION	Project No:	A3
Application Document Number:	TR010032/APP/7.16	Scale:	1:33,000
Drawing Title:	Figure 6.18c - Mitigation proposals in Warley Ward		
Drawing Number:	HE540039-C.V-EGN-SZP_EGNE0000000-DR-LE-80020		



Contains Ordnance Survey data. © Crown copyright and database rights 2022. Ordnance Survey 100030649

Rev	Status	Rev. Date	Purpose of revision	Drawn	Chkd	Apprvd
P01	S8	18/10/2022	DCO Application	SW	SW	BF

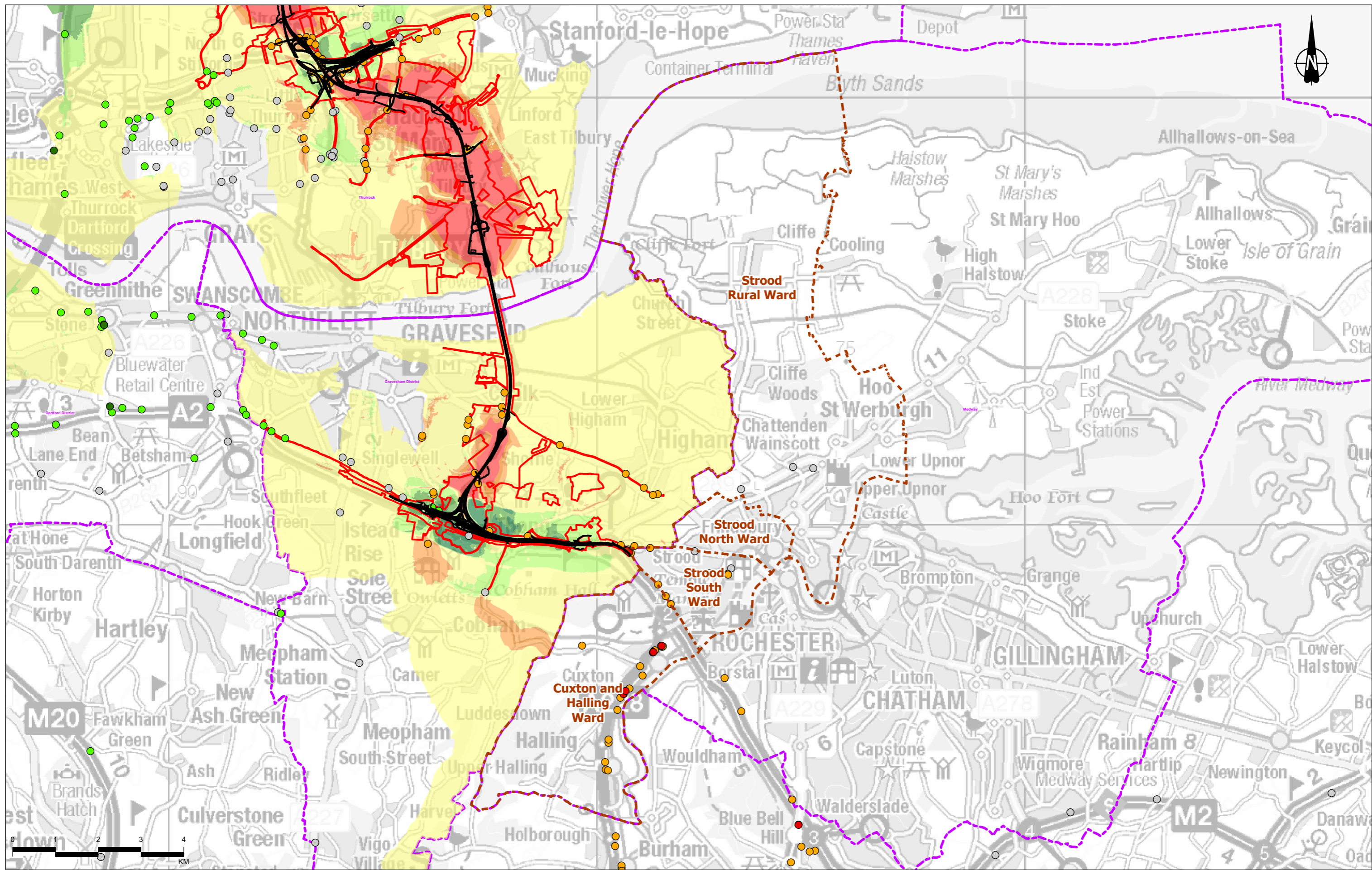
Legend
 Electoral ward boundary



Client
 national highways
 Project
LOWER THAMES CROSSING

Status	DCO APPLICATION	Original Size	A3	Revision	P01
Application Document Number	TR010032/APP/7.16	Scale	1:23,000		
Drawing Title	Figure 6.18c(iii) - Mitigation proposals in South Weald Ward				
Drawing Number	HE540039-CJV-EGN-SZP_EGNE0000000-DR-LE-80020				

Z:\Environment\Community Impacts Report\Figure 6c - Mitigation Proposals.aprx



Contains Ordnance Survey data. © Crown copyright and database rights 2022. Ordnance Survey 100030649

P01	S8	11/10/2022	DCO Application	SW	SW	BF
Rev	Status	Rev. Date	Purpose of revision	Drawn	Chkd	Apprvd

Legend

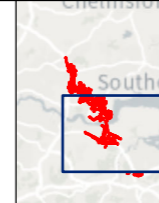
- Route alignment
- Order Limits
- District/Borough/Unitary region
- Electoral ward boundary

Degree of change in annual average nitrogen dioxide (NO₂) concentrations

- Red circle: A worsening in air quality (in NO₂ where Air Quality Strategy objective is exceeded)
- Orange circle: A minor worsening in air quality
- Grey circle: Negligible
- Green circle: A minor improvement in air quality
- Dark green circle: An improvement in air quality (in NO₂ where Air Quality Strategy objective is exceeded)

Operation change in road traffic noise opening year

- Dark green: Major noise reduction, 5dB(A) or more
- Light green: Moderate noise reduction, 3 to 4.9dB(A)
- Yellow-green: Minor noise reduction, 1 to 2.9dB(A)
- Yellow: Negligible noise change, less than 1dB(A)
- Orange: Minor noise increase, 1 to 2.9dB(A)
- Red-orange: Moderate noise increase, 3 to 4.9dB(A)
- Red: Major noise increase, 5dB(A) or more

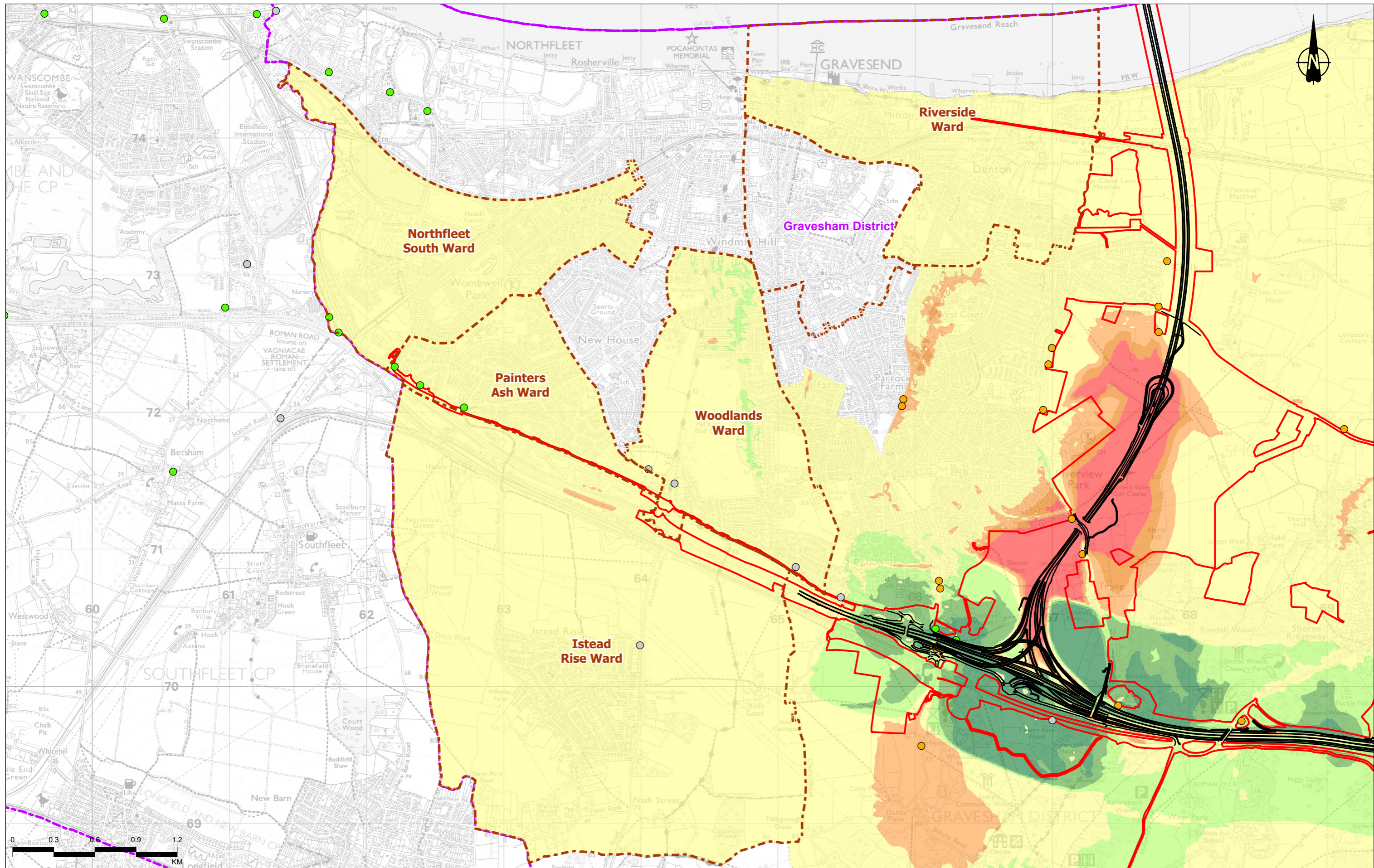


Client: highways england

Project: LOWER THAMES CROSSING

Status	DCO APPLICATION	Original Size	A3	Revision	P01
Application Document Number	TR010032/APP/7.16	Scale	1:80,000		
Drawing Title	Figure 7.1 - Community impacts in the wider area: Medway				
Drawing Number	HE540039-CJV-EGN-SZP_EGNE00000000-DR-LE-80021				

Z:\Environment\Community Impacts Report\Chapter 7 figures - Community impacts in the wider area.aprx



Contains Ordnance Survey data. © Crown copyright and database rights 2022. Ordnance Survey 100030649

P01	S8	11/10/2022	DCO Application	SW	SW	BF
Rev	Status	Rev. Date	Purpose of revision	Drawn	Chkd	Apprvd

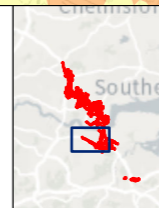
Legend

- Route alignment
- - - Order Limits
- ▭ District/Borough/Unitary region
- ▭ Electoral ward boundary

Degree of change in annual average nitrogen dioxide (NO₂) concentrations

- A minor worsening in air quality
- Negligible
- A minor improvement in air quality
- Operation change in road traffic noise opening year
- Major noise reduction, 5dB(A) or more

- Moderate noise reduction, 3 to 4.9dB(A)
- Minor noise reduction, 1 to 2.9dB(A)
- Negligible noise change, less than 1dB(A)
- Minor noise increase, 1 to 2.9dB(A)
- Moderate noise increase, 3 to 4.9dB(A)
- Major noise increase, 5dB(A) or more

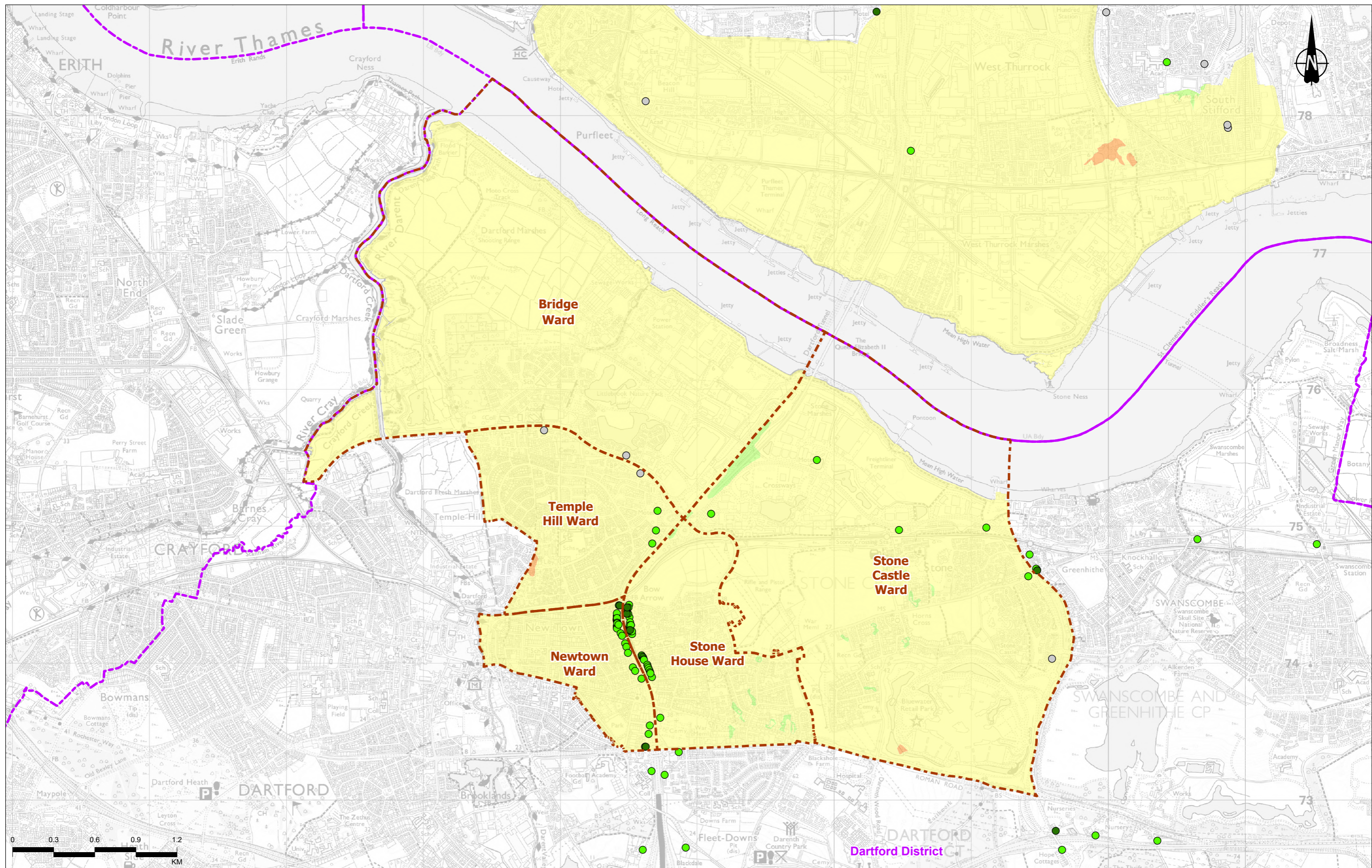


Client
highways england

Project
LOWER THAMES CROSSING

Status	DCO APPLICATION	Original Size	A3	Revision	P01
Application Document Number	TR010032/APP/7.16	Scale	1:25,000		
Drawing Title	Figure 7.2 - Community impacts in the wider area: Gravesham				
Drawing Number	HE540039-CJV-EGN-SZP_EGNE00000000-DR-LE-80022				

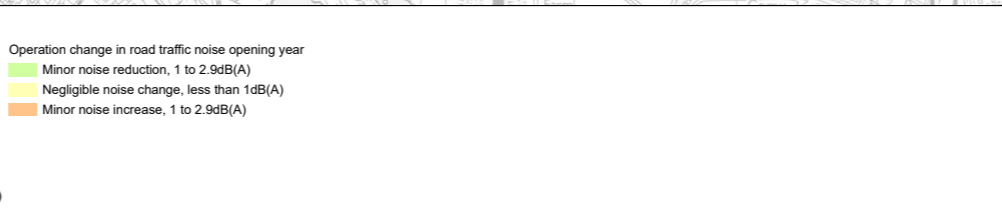
Z:\Environment\Community Impacts Report\Chapter 7 figures - Community impacts in the wider area.aprx



Contains Ordnance Survey data. © Crown copyright and database rights 2022. Ordnance Survey 100030649

P01	S8	11/10/2022	DCO Application	SW	SW	BF
Rev	Status	Rev. Date	Purpose of revision	Drawn	Chkd	Apprvd

- Legend**
- Route alignment
 - Order Limits
 - District/Borough/Unitary region
 - Electoral ward boundary
 - Degree of change in annual average nitrogen dioxide (NO₂) concentrations
 - Negligible
 - A minor improvement in air quality
 - An improvement in air quality (in NO₂ where Air Quality Strategy objective is exceeded)
 - Operation change in road traffic noise opening year
 - Minor noise reduction, 1 to 2.9dB(A)
 - Negligible noise change, less than 1dB(A)
 - Minor noise increase, 1 to 2.9dB(A)

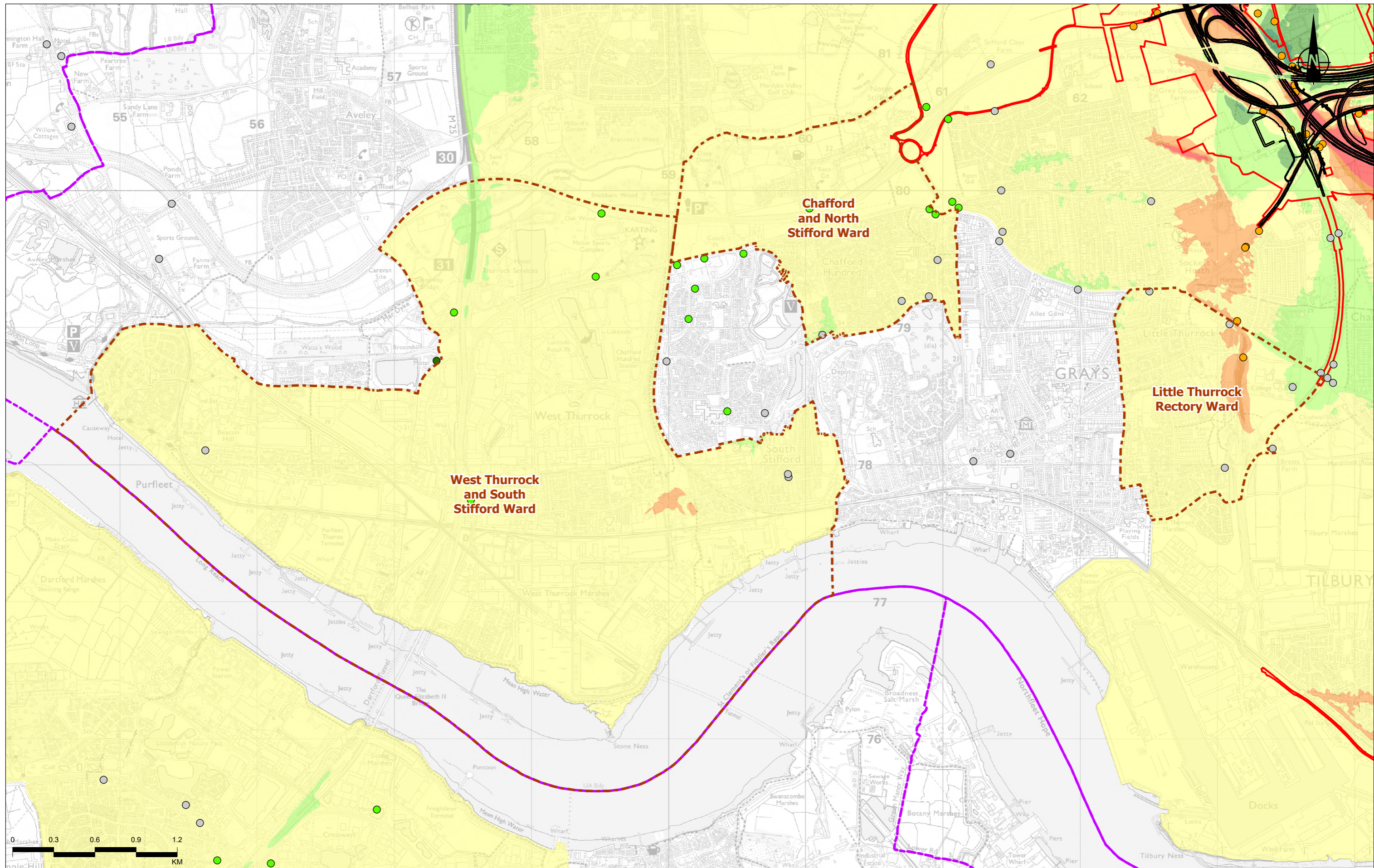


Client: highways england

Project: LOWER THAMES CROSSING

Status	DCO APPLICATION	Original Size	A3	Revision	P01
Application Document Number	TR010032/APP/7.16	Scale	1:25,000		
Drawing Title	Figure 7.3 - Community impacts in the wider area: Dartford				
Drawing Number	HE540039-CJV-EGN-SZP_EGNE00000000-DR-LE-80023				

Z:\Environment\Community Impacts Report\Chapter 7 figures - Community impacts in the wider area.aprx



Contains Ordnance Survey data. © Crown copyright and database rights 2022. Ordnance Survey 100030649

P01	S8	11/10/2022	DCO Application	SW	SW	BF
Rev	Status	Rev. Date	Purpose of revision	Drawn	Chkd	Apprv'd

Legend

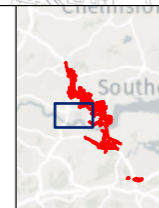
- Route alignment
- Order Limits
- District/Borough/Unitary region
- Electoral ward boundary

Degree of change in annual average nitrogen dioxide (NO₂) concentrations

- A minor worsening in air quality
- Negligible
- A minor improvement in air quality
- An improvement in air quality (in NO₂ where Air Quality Strategy objective is exceeded)
- Operation change in road traffic noise opening year
- Major noise reduction, 5dB(A) or more

Degree of change in annual average road traffic noise opening year

- Moderate noise reduction, 3 to 4.9dB(A)
- Minor noise reduction, 1 to 2.9dB(A)
- Negligible noise change, less than 1dB(A)
- Minor noise increase, 1 to 2.9dB(A)
- Moderate noise increase, 3 to 4.9dB(A)
- Major noise increase, 5dB(A) or more

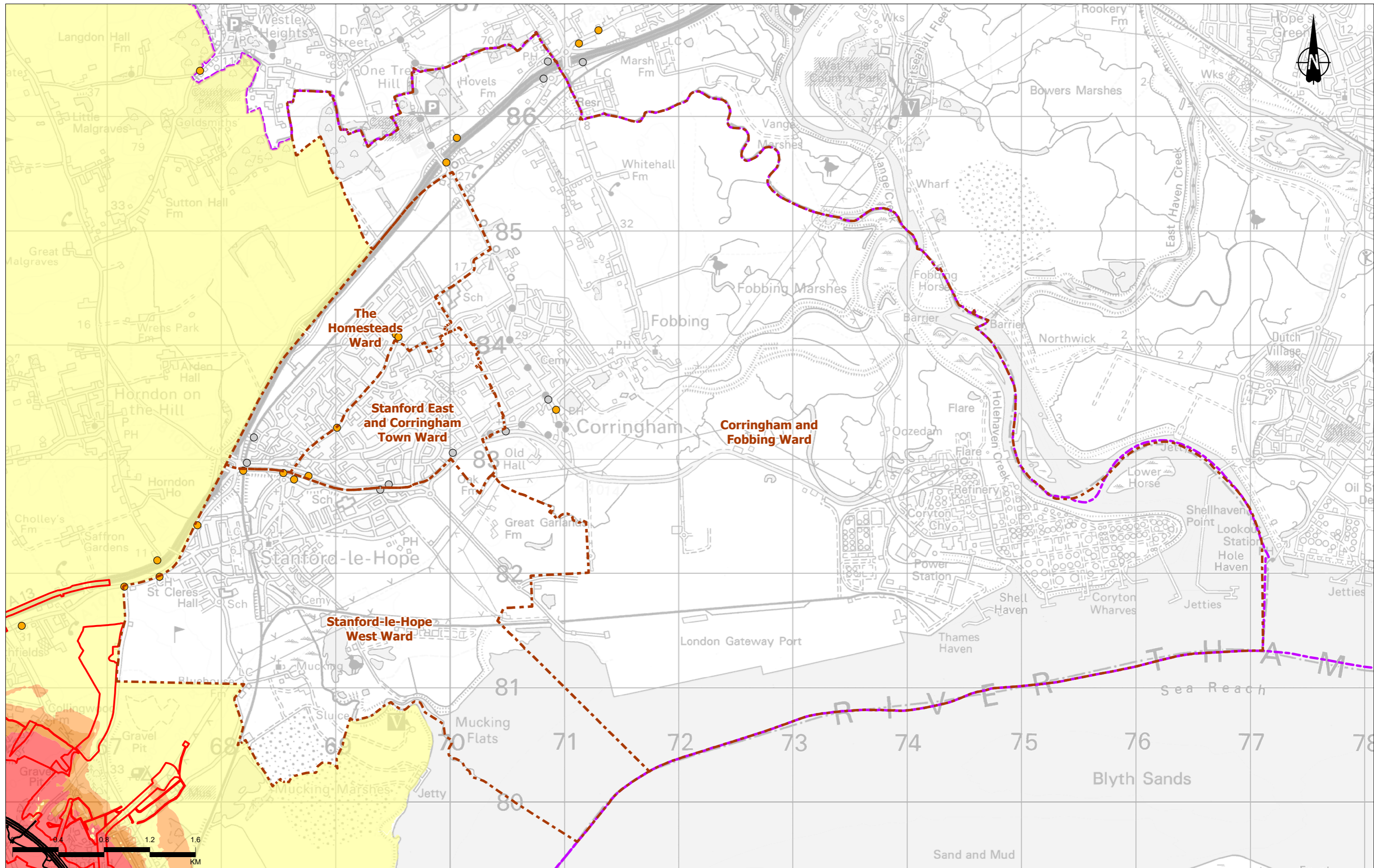


Client
highways england

Project
LOWER THAMES CROSSING

Status	DCO APPLICATION	Original Size	A3	Revision	P01
Application Document Number	TR010032/APP/7.16	Scale	1:25,000		
Drawing Title	Figure 7.4 - Community impacts in the wider area: Thurrock - west of Project				
Drawing Number	HE540039-CJV-EGN-SZP_EGNE0000000-DR-LE-80024				

Z:\Environment\Community Impacts Report\Chapter 7 figures - Community impacts in the wider area.aprx

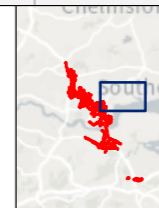


Contains Ordnance Survey data. © Crown copyright and database rights 2022. Ordnance Survey 100030649

P01	S8	11/10/2022	DCO Application	SW	SW	BF
Rev	Status	Rev. Date	Purpose of revision	Drawn	Chkd	Apprv'd

- Legend**
- Route alignment
 - ▭ Order Limits
 - ▭ District/Borough/Unitary region
 - ▭ Electoral ward boundary
 - Degree of change in annual average nitrogen dioxide (NO₂) concentrations
 - A minor worsening in air quality
 - Negligible

- Operation change in road traffic noise opening year
- ▭ Negligible noise change, less than 1dB(A)
 - ▭ Minor noise increase, 1 to 2.9dB(A)
 - ▭ Moderate noise increase, 3 to 4.9dB(A)
 - ▭ Major noise increase, 5dB(A) or more

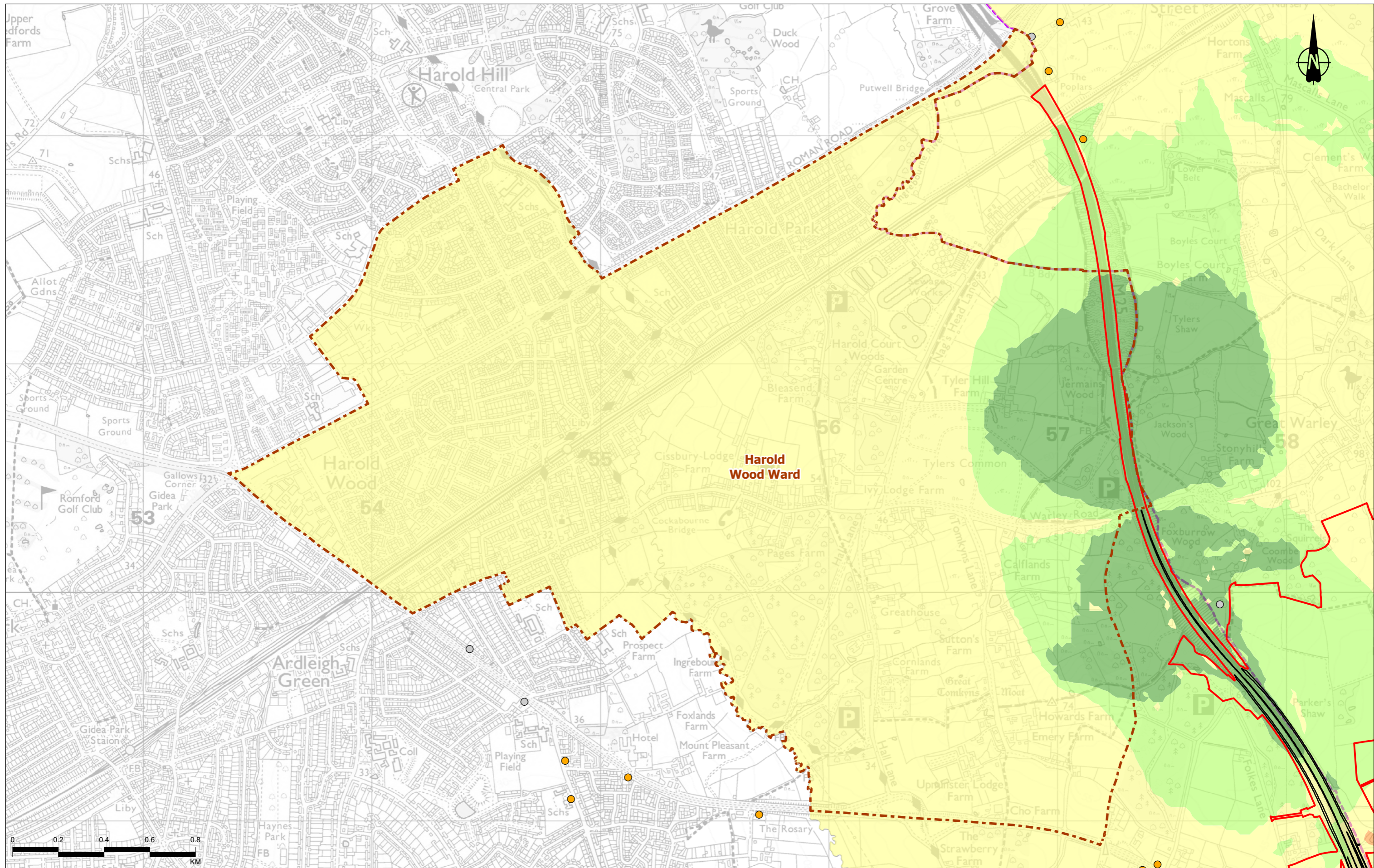


Client
highways england

Project
LOWER THAMES CROSSING

Status	DCO APPLICATION	Original Size	A3	Revision	P01
Application Document Number	TR010032/APP/7.16	Scale	1:30,000		
Drawing Title	Figure 7.5 - Community impacts in the wider area: Thurrock - east of Project				
Drawing Number	HE540039-CJV-EGN-SZP_EGNE00000000-DR-LE-80025				

Z:\Environment\Community Impacts Report\Chapter 7 figures - Community impacts in the wider area.aprx



Contains Ordnance Survey data. © Crown copyright and database rights 2022. Ordnance Survey 100030649

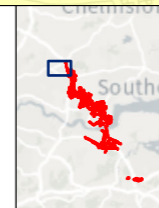
Rev	Status	Rev. Date	Purpose of revision	Drawn	Chkd	Apprvd
P01	S8	11/10/2022	DCO Application	SW	SW	BF

Legend

- Route alignment
- Order Limits
- District/Borough/Unitary region
- Electoral ward boundary
- Degree of change in annual average nitrogen dioxide (NO₂) concentrations
 - A minor worsening in air quality
 - Negligible

Operation change in road traffic noise opening year

- Moderate noise reduction, 3 to 4.9dB(A)
- Minor noise reduction, 1 to 2.9dB(A)
- Negligible noise change, less than 1dB(A)
- Minor noise increase, 1 to 2.9dB(A)



Client
 highways england
 Project
LOWER THAMES CROSSING

Status	DCO APPLICATION	Original Size	A3	Revision	P01
Application Document Number	TR010032/APP/7.16	Scale	1:15,000		
Drawing Title	Figure 7.6 - Community impacts in the wider area: Havering				
Drawing Number	HE540039-CJV-EGN-SZP_EGNE00000000-DR-LE-80026				

Z:\Environment\Community Impacts Report\Chapter 7 figures - Community impacts in the wider area.aprx

If you need help accessing this or any other National Highways information, please call **0300 123 5000** and we will help you.

© Crown copyright 2023.

You may re-use this information (not including logos) free of charge in any format or medium, under the terms of the Open Government Licence. To view this licence:

visit www.nationalarchives.gov.uk/doc/open-government-licence/

write to the **Information Policy Team, The National Archives, Kew, London TW9 4DU**, or email psi@nationalarchives.gsi.gov.uk.

Mapping (where present): © Crown copyright and database rights 2023 OS 100030649. You are permitted to use this data solely to enable you to respond to, or interact with, the organisation that provided you with the data. You are not permitted to copy, sub-licence, distribute or sell any of this data to third parties in any form.

If you have any enquiries about this publication email info@nationalhighways.co.uk or call **0300 123 5000***.

*Calls to 03 numbers cost no more than a national rate call to an 01 or 02 number and must count towards any inclusive minutes in the same way as 01 and 02 calls.

These rules apply to calls from any type of line including mobile, BT, other fixed line or payphone. Calls may be recorded or monitored.

Printed on paper from well-managed forests and other controlled sources when issued directly by National Highways.

Registered office Bridge House, 1 Walnut Tree Close, Guildford GU1 4LZ

National Highways Limited registered in England and Wales number 09346363